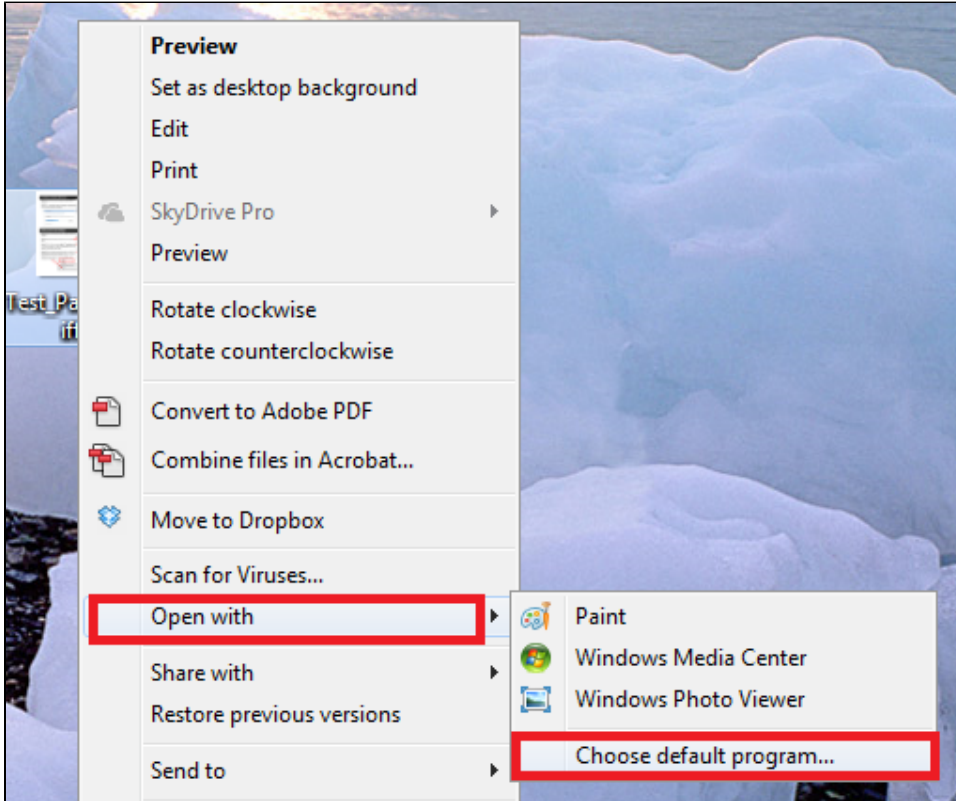


# Opening a .TIFF file with Windows Photo Viewer

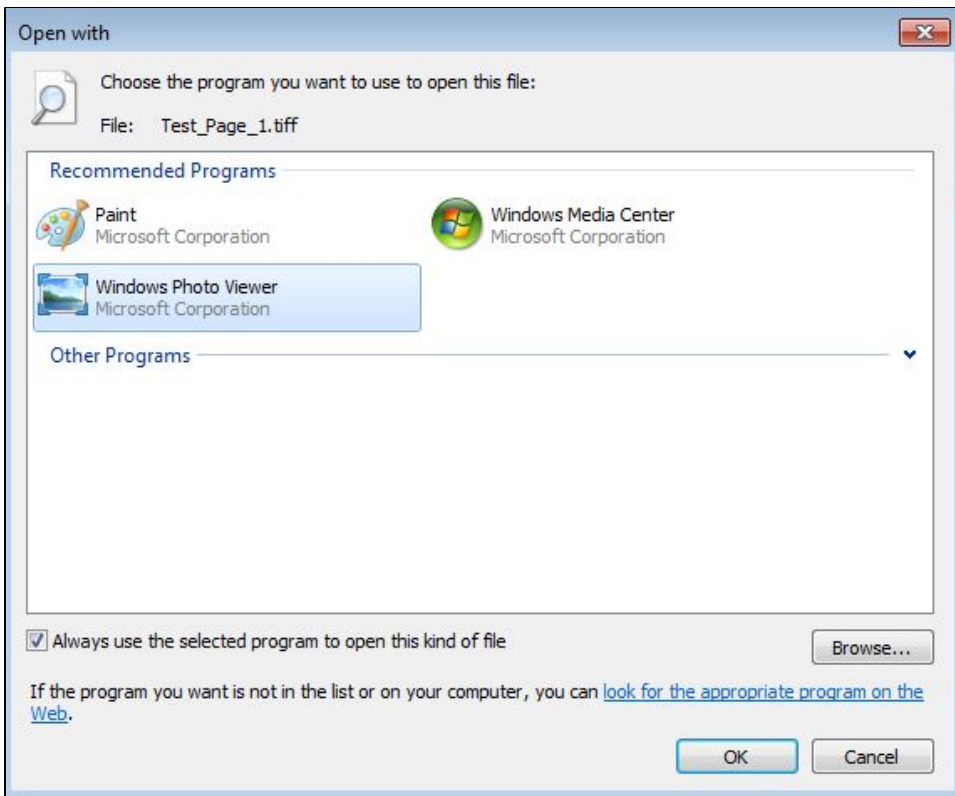
How to set the default program to Windows photo viewer for viewing .TIFF files

## Step-by-Step Guide

1. Right-click on a .TIFF document and select *Open With*



2. Select Windows Photo Viewer from Recommended Programs. If Windows Photo Viewer is not an option click *Browse*



3. Navigate to **C:\Program Files\Windows Photo Viewer** and select *PhotoViewer.dll*. Click *Open* and then *OK*

 to see *PhotoViewer.dll* make sure that *All Files* is selected

