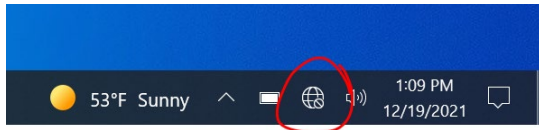
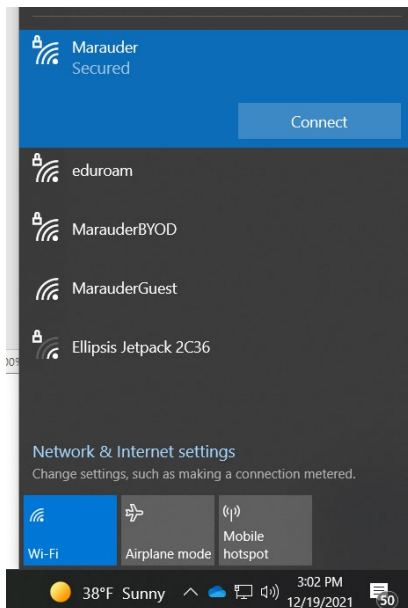


## Connecting to Marauder – Windows Device

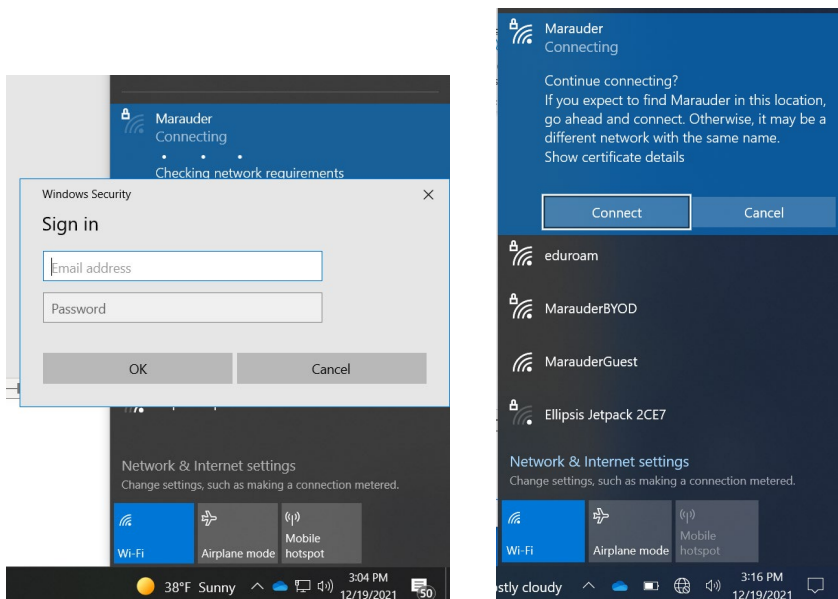
1. Log into your computer
2. Click on the **Network icon** on the taskbar:



3. Select the **Marauder** network and click **Connect**:



4. A **Windows Security** window will pop-up. Enter your **MU email address** and your **regular MU password**. Click **OK**. If you get the **Continue Connecting?** Message, click **Connect**:



5. A webpage will automatically open. If you have the correct security settings on your laptop already, you will be granted network access.

