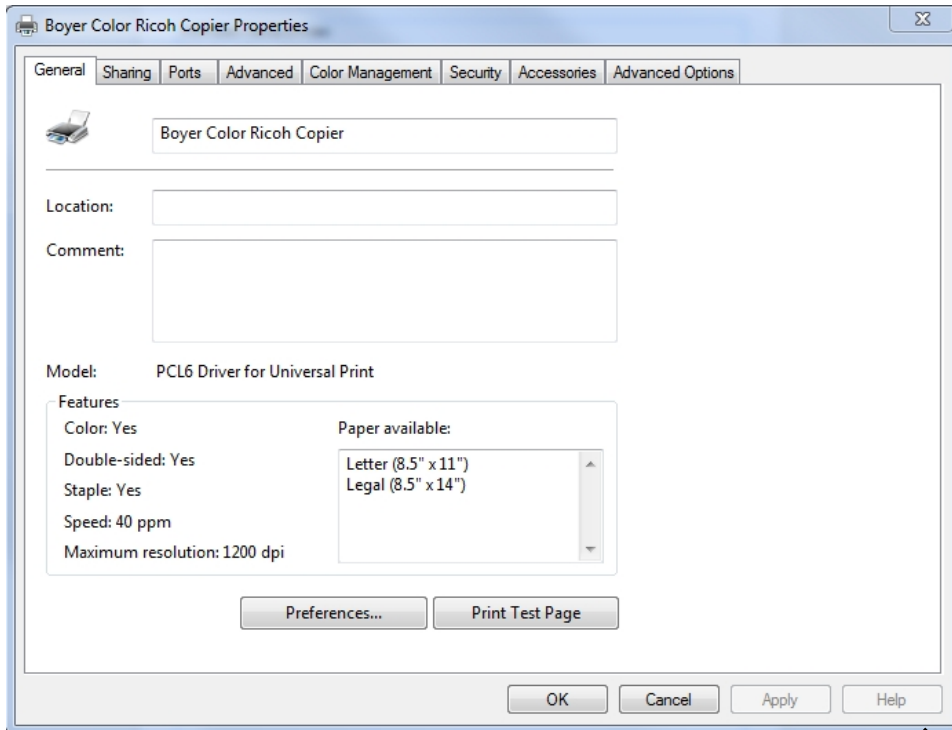


# PRINTING WITH RICOH USER CODES



**717-871-7777**

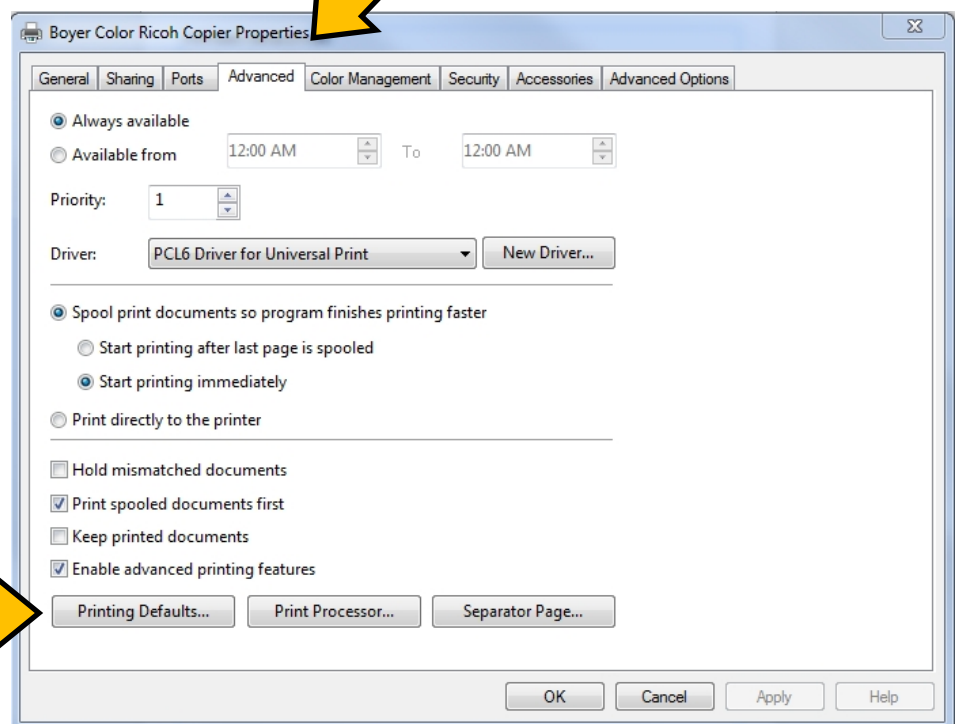


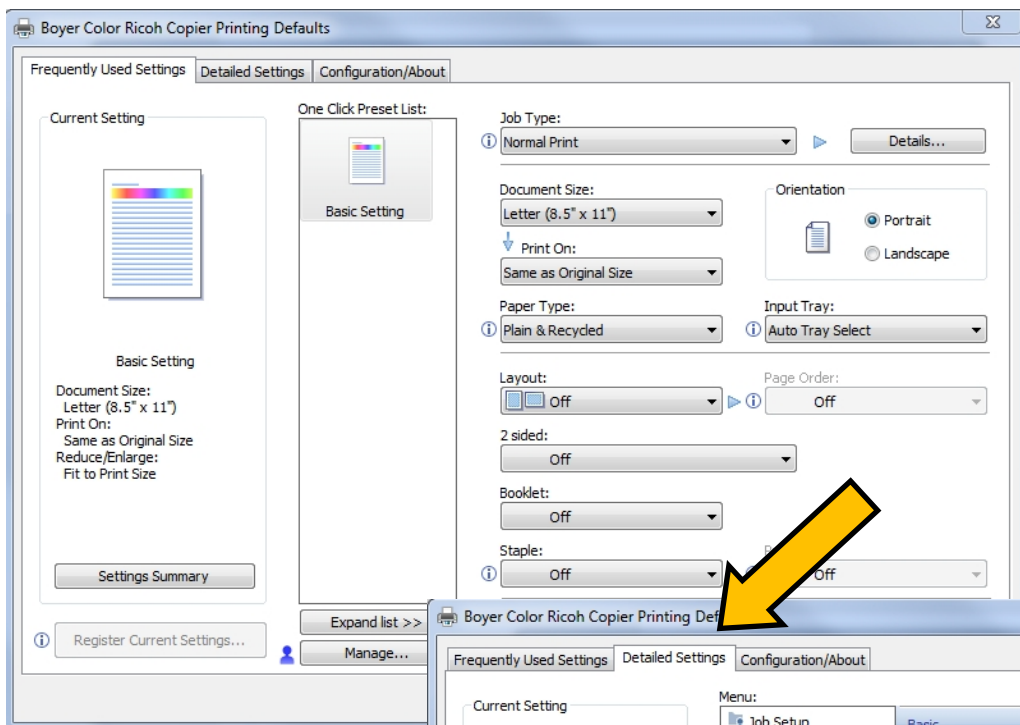
## STEP 1

Click START button  
Go to Devices & Printers  
Right Click on Ricoh  
Go to Printer Properties

## STEP 2

Select Advanced Tab  
Click Printing Defaults



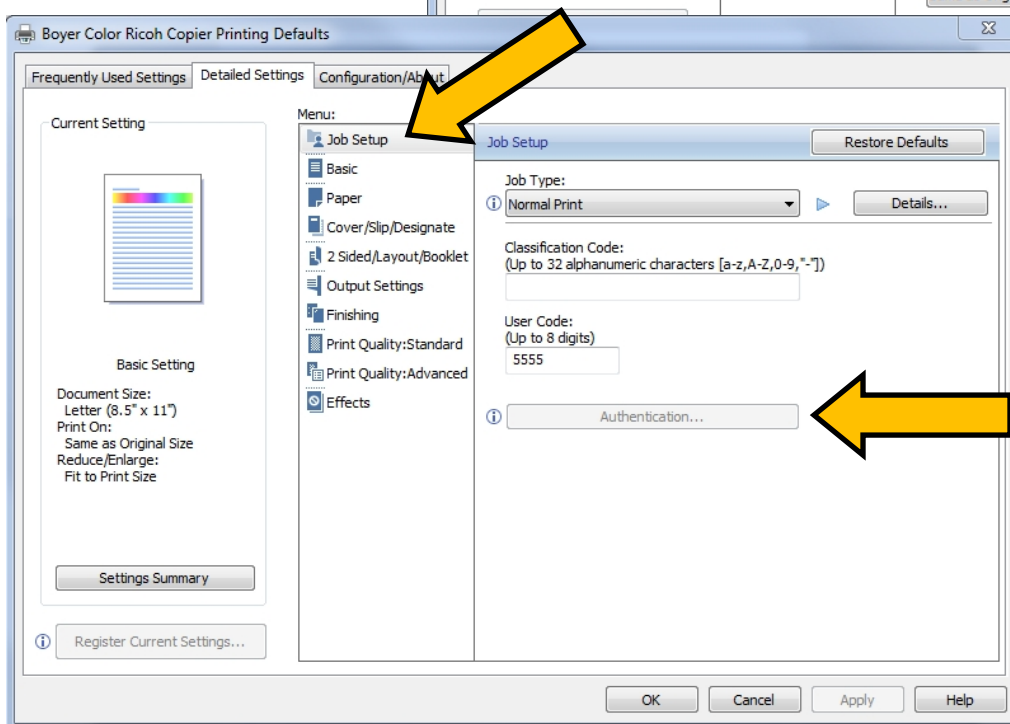
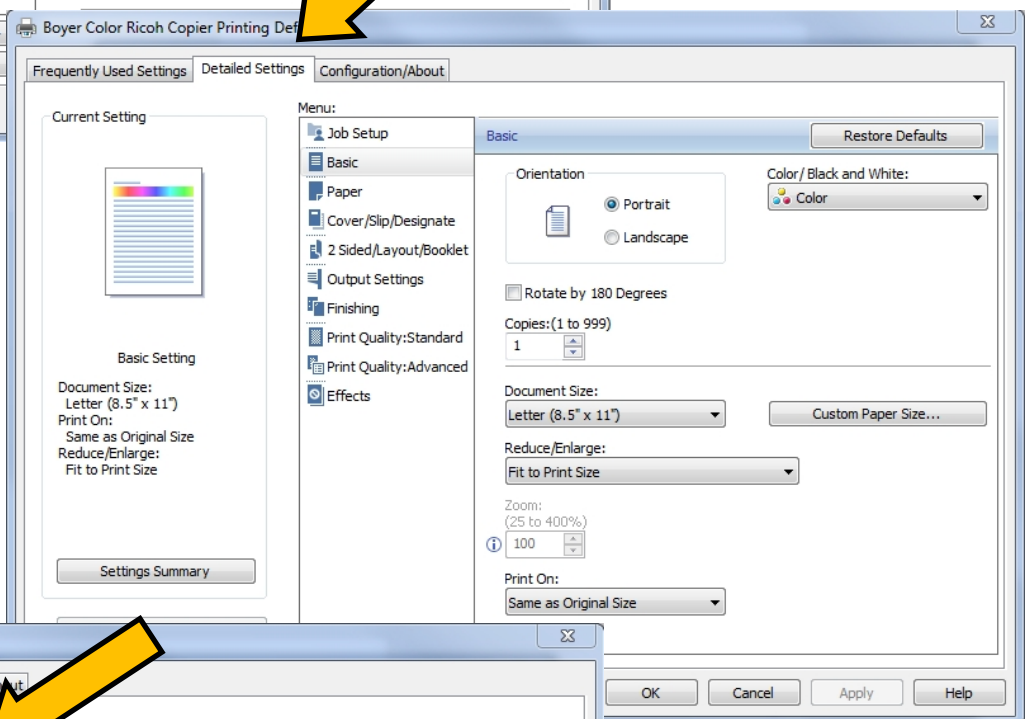


**STEP 3**

Click Detailed Settings Tab

**STEP 4**

Select Job Setup from Menu



**STEP 5**

Enter your User Code  
Click OK